

An illustration for Earth Day. In the center is a stylized Earth with green continents and a light blue background. Two hands, one on the left and one on the right, are shown from the bottom, cupping the Earth. Green leaves and branches are scattered around the globe. The text 'Earth DAY' is written across the center. 'Earth' is in a dark blue, cursive font, and 'DAY' is in a dark blue, bold, sans-serif font.

Earth DAY

BY MATTEO
SICUREZZA

DEFORESTATION

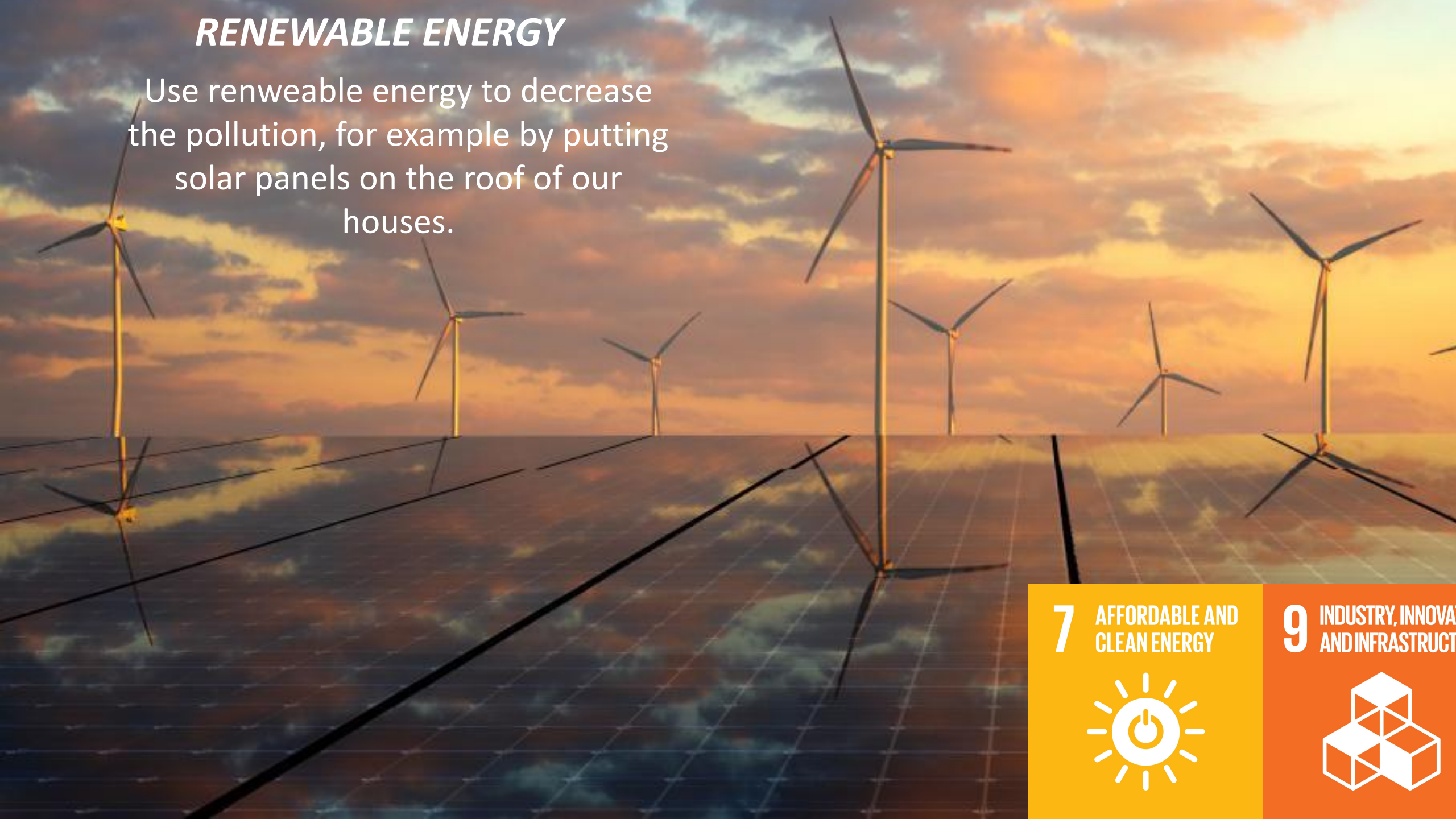
15 LIFE ON LAND



Reduce if not eliminate deforestation that with it we reduce the production of oxygen.

RENEWABLE ENERGY

Use renewable energy to decrease the pollution, for example by putting solar panels on the roof of our houses.



7 AFFORDABLE AND
CLEAN ENERGY



9 INDUSTRY, INNOVATION
AND INFRASTRUCTURE



SUSTAINABLE MOBILITY

Use when you can electric vehicles or use the bicycle or go on foot for not too long distances.



**SUSTAINABLE CITIES
AND COMMUNITIES**