



Presented by Ginevra Consalvi & Riccardo Gagliardi

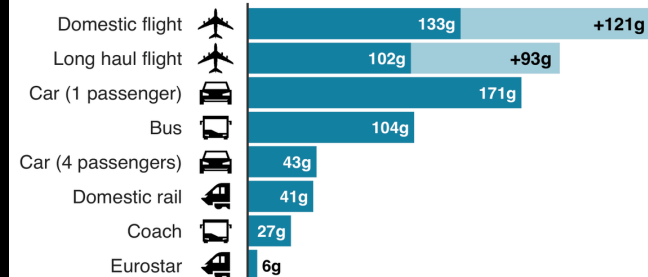
CHANGES FOR A NEW WORLD

Electric cars

Emissions from different modes of transport

Emissions per passenger per km travelled

■ CO2 emissions ■ Secondary effects from high altitude, non-CO2 emissions

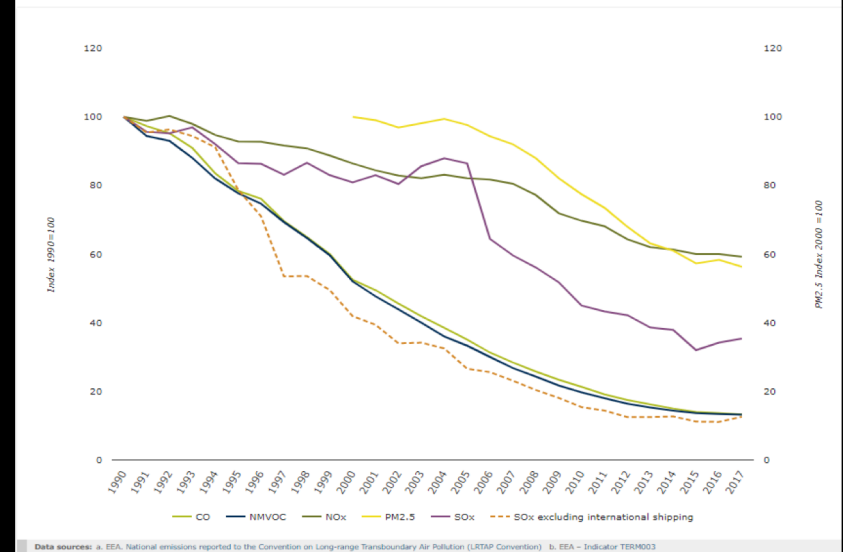


Note: Car refers to average diesel car

Source: BEIS/Defra Greenhouse Gas Conversion Factors 2019

BBC

Figure 2. Trends in emissions of air pollutants from transport



Data sources: a. BEA, National emissions reported to the Convention on Long-range Transboundary Air Pollution (CLRTAP Convention); b. BEA - Indicator TSM003



Sustainable cities and communities

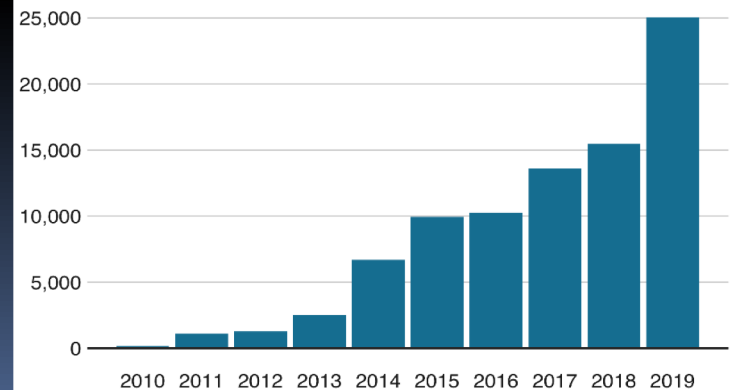
Challenges

The **RAPID** and often **UNPLANNED URBANIZATION** witnessed worldwide has led to **INCREASED PRESSURE ON THE ENVIRONMENT**



Zero-emission cars on the rise

Total UK annual registrations of battery electric cars



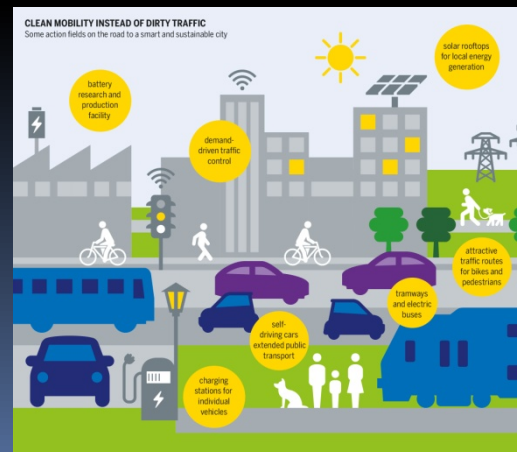
Note: 2019 shows data from January to September

Source: SMMT

BBC

(New) means of transport

- The Sustainable Development Agenda
- New ideas: ecological fuels, research and technological development, new prototypes
- Civil commitment
- National and international commitment



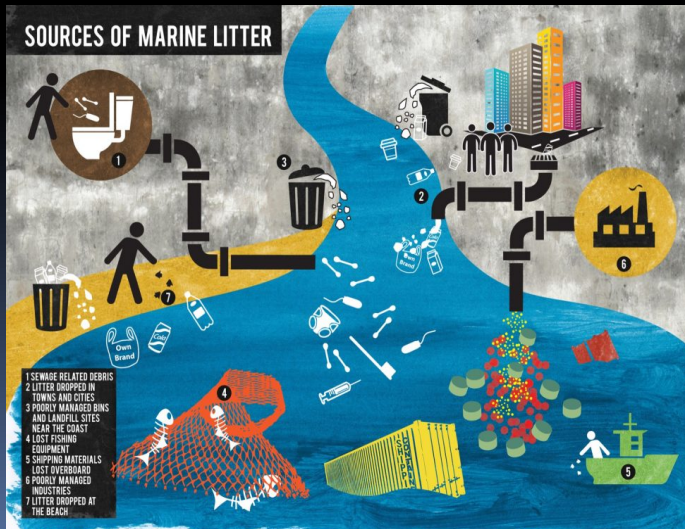
Meetings

- WWF

https://www.wwf.it/spiagge_plastic_free.cfm

- Big Spring Beach Clean (BSBC)

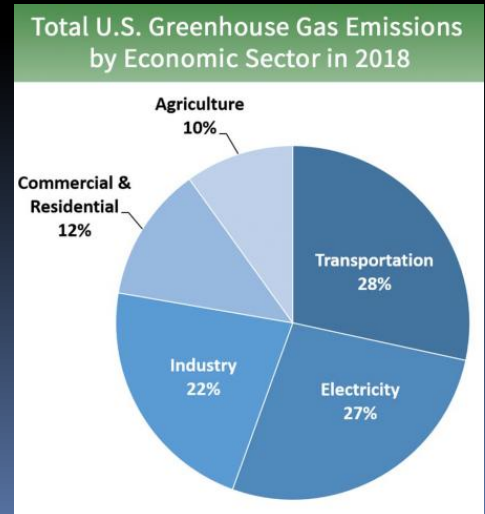
<https://www.sas.org.uk/our-work/beach-cleans/big-spring-beach-clean/>



To reduce factories' emissions

- Greenhouse Gas Emissions
- Effects of the factories' emissions on the Earth
- Effects of the factories' emissions on humans

CAN WE FIND A VALID (AND FAST)
SOLUTION?





Is the Covid-19 linked with
global emissions?